

## Abstract of Thesis:

“Anthropology of the space for the project of a Macrobiotic Care Centre in Thailand”

Silvia Ombellini, Simone Riccardi, Sergio Ricci,

Florence, 2003.



In 2001 the Ministry of Public Health of Thailand and the international association “Un Punto Macrobiotico” requested to the University of Study of Florence the design of a Care Centre that will be realized in North East of Thailand.

In order to respect the request of commitments, the project is based on sustainable method, on simple and low-energy technologies, on traditional materials, that insure the minimum energy-waste and maximum quality of the interior environment.



The project start from the study of a method of sustainability's control and check in each step of the projecting process. The study of the Life Cycle Analysis of each building and of each material used is made in order to give a global balance of the project about its consequences on natural environment, on the local culture and on the human health.

The project does everything possible to get back the architectonic identity of Thailand and the original meaning of care in Thai culture, that are both lost in the urban situation and in the modern hospital, made in western stile.

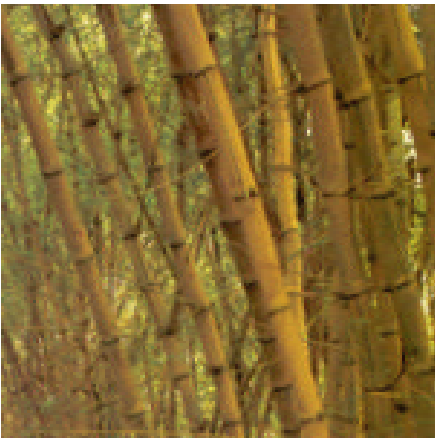


The Architectonic organization of the Macrobiotic Care Centre is inspired to Thai temple, because this sacred space is very important in Thai culture. It represents the main community centre, the place of spirituality, of protection, of communication, of education and the place of spiritual and physical care.

Temple is the space of traditional care of body and mind. In temple were born the ancient schools of massage and acupuncture. Temple represents the continuity from eastern traditional care to macrobiotic care, contrasting with modern western hospital made of concrete and iron.



The project consist of many different structures, that are integral parts of the big garden area. The spirits of each pavilion is to merge the dwelling with its surrounding creating ambiguous and intermediate spaces. This servers the functional purpose of modifying the hot climate, reducing hot and providing shade, while simultaneously creating poetic changes of light and shade.



A landscape courtyard with a pool at its centre, surrounded from main pavilions, is the focus space of the project. This open-to-sky space is an outdoor public area. It forms an extension of the living area were visitors and doctors can eat, drink and relax. This core of the project represent a symbolic space: it's the place of calmness, solitude and peace, the place of the relationship with nature (water, earth, trees and sky are the principal elements). In the center of the pool there is the rice that is the main element of macrobiotic care and a symbolic element of Thai culture.



One of pavilions in made by bamboo. It represent a pilot project in order to develop the tradition of bamboo use in Thailand. In last fifty years this material has been replaced with concrete, glass, corrugated iron and plastic. The consequence of using this western materials, especially glass and concrete, is that they inevitably lead to the installation of air conditioning. Bamboo is the perfect building material in Thailand: it grows rapidly, it is easy to pick up, to transport and to work, it is right for tropical climate, it hasn't harmful effect on human health, it has very good mechanical proprieties, it has an acceptable duration.